

PE terminals

Identically contoured design of 2.5 to 10 mm² with identical end plates and partitions. An unmatched combination of many advantages!
The compact terminals are impressive for their small size and rated cross-section capacity.

In hazardous area applications, the installation instructions and the rated data specifications for accessories given in the technical appendix must be followed.

Width/Length/Height of lowest version	mm
max. cond. cross-section	mm ²
Max. clamping range	mm ²

Technical data

Rated data	
Rated cross-section	mm ²
Rated voltage to adjoining terminal	V
Rated impulse withstand voltage to adjacent terminal	kV
Rated short-time current	
Pollution severity	
Gauge to IEC 60947-1 / Flammability class UL94	
Approvals	

Clamped conductors (H05V/H07V)	
Solid / stranded	mm ²
Flexible / Flexible with ferrule	mm ²
Tightening torque range (terminal screw)	
Tightening torque range for fixing screw	
Stripping length / Blade size	mm/-

Note

Ordering data

Version	green/yellow Wemid
---------	--------------------

Note

Accessories

PEN bridge	
End bracket	Dark beige Wemid
Screwdriver	Standard

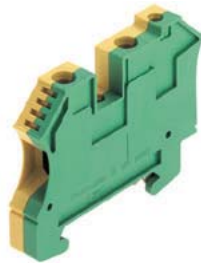
Identification systems (see assortment in catalogue 7)
Marking tags

Note

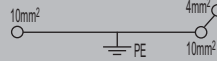
WPE 10/ZR

10 mm²

Supplementary connection, right (4 mm²)



9.9 x 66 x 49.5	
16	
1.31...16	



IEC 60947-7-2

IEC	UL	CSA
10	AWG 16...6	AWG 14...6
1000		
8		
	1200 A (10 mm ²)	
	3	
	B6, A4 / V-0	

Rated connection		Further connection	
1.5...16 / 1.5...16		0.5...6 / 1.5...4	
1.5...16 / 1.5...16		0.5...4 / 1.5...16	
1.2...2.4 Nm (M 4)			
0.5...1.0 Nm (M 3)			
12 / 0.6 x 3.5 mm		10 / 0.6 x 3.5 mm	

Max. conductor cross-sections refer to 10 mm² and 16 mm² connections. AWG 6/7 and H07V-R16 tighten with 2.4 Nm.

Type	Qty.	Order No.
WPE 10/ZR	50	1042500000

Type	Width	Qty.	Order No.
WQB-PEN 10	14.8 mm	10	1060300000
WEW 35/2	8 mm	100	1061200000
SDS 0.6X3.5X100		1	9008330000

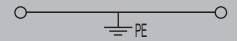
DEK 5/5 / WS 12/6,5
Rail holder for protective isolation Installation of the mounting rail "SH 2" Order no. 0494920000 (qty. 10).

WPE 16

16 mm²



11.9 x 56 x 63	
25	
1.5...25	



IEC 60947-7-2

Ex e II II 2 G D

IEC	UL	CSA	EN 60079-7
16	AWG 14...4	AWG 14...6	1616
1000			
8			
	1920 A (16 mm ²)		
	3		
	B7 / V-0		

Rated connection		Further connection	
1.5...16 / 1.5...25			
1.5...25 / 1.5...16			
2...3.6 Nm (M 5)			
1.2...2.4 Nm (M 4)			
16 / 1.0 x 5.5 mm			

For 25 mm², the TS 35 x 15 (steel, 1.5 mm thick) should be used. Conductor connection H07V...16 and AWG 6 with tightening torque of 2.0-2.4 Nm.

Type	Qty.	Order No.
WPE 16	50	1010400000

Type	Width	Qty.	Order No.
WQB-PEN 16	17.6 mm	10	1060200000
WEW 35/1	12 mm	50	1059000000
SDS 1.0X5.5X150		1	9008350000

DEK 5/5 / WS 12/6,5
Rail holder for protective isolation Installation of the mounting rail "SH 2" Order no. 0494920000 (qty. 10).